

Counseling Psychology Update

Newsletter of the Counseling Psychology Program

University of North Texas ~ Volume XV, No. 1, Fall 2012

1155 Union Circle #311280 Denton, TX 76203-5017

Congratulations to Our Award-Winning Students!

Sally Dockendorff Outstanding Thesis Award \$150
Faculty Advisor: Trent Petrie, PhD
Thesis Title: Intuitive Eating Scale: An examination among early adolescents

Carly Heffel 2012 Psychology Research Day Graduate Student Award 3rd Place \$75
Heffel, C., & Riggs, S. "Factor analysis of an instrument measuring spouses' perception of attachment-related behaviors"

Sara Pollard 2012 National Psychologist Trainee Register Credentialing Scholarship

Congratulations to our 2012 Master's Degree Recipients

Nicholas Matthew Beck
Karen M. Benson
Ashlie A. Rueber
Nicole D. Stillo

Christon William Boxill
Justine Chatterton
Milena Sakura Fertitta
Robert Gomez

Carly Jean Heffel
Kristen Melinda Kettler
Robert Mason McCamey
Stephanie Dianne Womack

Congratulations to our August 2012 Doctoral Graduates

Matthew Atkins, Ph.D.
Postdoctoral Fellow
Dallas VA Medical Center
Dallas, TX

Laura DiPasquale, Ph.D.
Staff Psychologist
Florida Atlantic University Counseling
and Psychological Services
Boca Raton, FL

Whitney Neal Hasbrouck, Ph.D.
Staff Psychologist
Joint Base McGuire-Dix-Lakehurst, NJ
Burlington, NJ



Elissa "Lizzie" Woodruff, Ph.D.
Postdoctoral Fellow
Comorbid Conditions: Eating Disorders
& Chemical Dependency
Kaiser Permanente Eating Disorder &
Chemical Dependency Recovery
Program
Oakland, CA

Amber (Walker) Wright, Ph.D.
Staff Psychologist
University of Texas at Dallas Student
Counseling Center
Dallas, TX



WELCOME

New Students!

We asked our new students where they are from, their previous institution & degree(s), and which elective cluster they have chosen.

Bailey Tackett

Columbia, South Carolina
B.A. in Psychology &
Neuroscience
University of South Carolina
Sports Psychology Cluster

Matt Schumacher

Edmonds, Washington
B.A. in Psychology
Washington State University
M.A. in Counseling
University of North Dakota
Sports Psychology Cluster



Stacy Bonds

Salt Lake City, UT
B.A. in Psychology
St. Olaf College
Child & Family Cluster

Gabriel Zamudio

Sheffield, United Kingdom
B.A. in Psychology
Universidad Regiomontana
(Mexico)
M.A. in Counseling Psychology
Our Lady of the Lake
University
Child & Family Cluster

Kayla Carrigan

Blackfoot, Idaho
B.A. in Psychology
University of Delaware
Sport Psychology Cluster



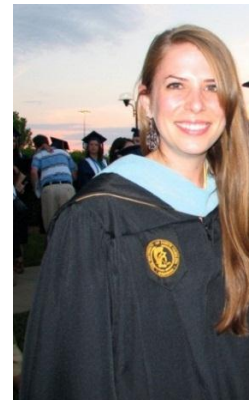
Andrew Shelton

Mendoza, Argentina
B.A. in Psychology
Baylor University
M.A. in Clinical Psychology
Wheaton College
Child & Family Cluster



Krystal Stephen (Kris)

Houston, TX
B.S. in Psychology
Sam Houston State University
Child & Family Cluster



Alexandra Thompson

(Alex or AT)
Asheville, NC
B.S. in Psychology
Davidson College
M.S. in Counseling
University of North Carolina
at Greensboro
Sport Psychology Cluster

Welcome New Faculty!

Dr. Heidemarie Blumenthal has joined the UNT Psychology Department as a tenure-track Assistant Professor and core faculty member of the Applied Experimental Psychology Program. She recently completed her PhD in experimental psychology at the University of Arkansas, where her training and research focused on human adolescent development and experimental developmental psychopathology. Her current and published work addresses the etiology of anxiety and problematic substance use, with an emphasis on how (1) significant facets of adolescent development (e.g., puberty) contribute to the onset and maintenance of anxiety psychopathology and problematic alcohol use behaviors, and (2) anxiety vulnerability and alcohol use problems may be linked during this developmental period. She plans to build a laboratory-based research program that will incorporate a variety of methodological techniques (e.g., experimental psychopathology, hormone assessment, short-term prospective) as she continues this work here at UNT.



Dr. Yolanda Flores Niemann (Ph.D., Psychology, 1992, University of Houston) joined UNT this past summer as Senior Vice Provost and Professor of Psychology. Previously she served in administrative roles as Vice Provost and as Dean of the College of Humanities, Arts, and Social Sciences at Utah State University, and held numerous administrative positions at Washington State University. She has been Principal Investigator of over 40 million dollars in federal outreach grants, as well as serving on the Washington State Governor's Commission on Hispanic Affairs and on multiple committees of the American Psychological Association and the Society of Indian Psychologists. Her research interests include the effects and social ecological contexts of stereotypes across various domains, the psychological effects of tokenism, and overcoming obstacles to higher education for low socio-economic status group members. Notable book publications include (with multiple authors) *Presumed Incompetent: The Intersections of Race and Class for Women in Academia*; *Black/Brown Relations and Stereotypes*; and *Chicana Leadership*. Notable refereed journals and book chapters are published in *To Improve the Academy*, *The Handbook of Chicana and Chicano Psychology and Mental Health*, *The Handbook of Racial and Ethnic Minority Psychology*, *The Journal of Social Issues*, *Hispanic Journal of Behavioral Sciences*, *Journal of Applied Psychology*, *Journal of Applied Social Psychology*, *Sociological Perspectives*, *Personality and Social Psychology Bulletin*, and *The Journal for the Theory of Social Behavior*.



Dr. Thomas D. Parsons has recently joined the UNT Psychology Department as an Associate Professor and core faculty member of our APA-accredited Clinical Program. He will be teaching the graduate Neuropsychology and Assessment courses. For the past 6 years Dr. Parsons was on faculty at the University of Southern California. He is currently in the process of moving his Clinical Neuropsychology and Simulation (CNS) lab from USC to UNT. Dr. Parsons is a Clinical Neuropsychologist and his research focuses on the role of frontal subcortical circuits that underlie neurocognitive and affective regulation following trauma (e.g. brain injury; post-traumatic stress disorder); and/or neurological illness (e.g. HIV; Alzheimer's Parkinson's). This work also includes neurodegenerative disorders that affect frontostriatal function (Autism; ADHD). Much of his research integrates psychology and technology. In addition to his patent for eHarmony's Matching System, he has invented and makes use of virtual environments and artificial neural networks to assess the frontostriatal system's supervisory attentional system and adaptive responding to environmental situations.



Dr. Zina Trost has joined the UNT Psychology Department as a tenure-track Assistant Professor and she is a core faculty member of our APA-accredited Clinical Health & Behavioral Medicine Consortium Program. Dr. Trost obtained her degree in clinical health psychology from Ohio University and completed her clinical internship at the University of Washington Medical Center. She then completed a two-year research fellowship at McGill University in collaboration with Ghent University in Belgium. Dr. Trost's research addresses the cognitive, affective, and behavioral dimensions of pain that may contribute to development of disability or facilitate positive adjustment following physical injury. Specifically, her work has addressed pain-related fear and avoidance behavior in musculoskeletal pain and has recently expanded to interpersonal processes in the context of pain and illness (including interpersonal pain appraisal and perceptions of injustice). She has conducted laboratory-based research with chronic pain sufferers as well as healthy individuals using an experimental analogue of back injury. She has recently been elected co-chair of the Psychosocial Research SIG of the American Pain Society and chairs the Taskforce on International Relations for the Health Psychology Division (Division 38) of the APA.





Faculty News

Dr. Tim Lane was elected president of the Association for the Coordination of Counseling Center Clinical Services (ACCCCS), and will be installed during Spring 2013. Also Dr. Lane was selected to serve a three year term on the Advisory Board of the Center for Collegiate Mental Health (CCMH), a national research consortium of more than 160 colleges and universities.

Dr. Trent Petrie is the current president of Division 47 (Exercise and Sport Psychology) of the American Psychological Association and will serve in this position through 2013.

Dr. Shelley Riggs has been expanding her family attachment research to military veterans and is currently collecting data for a study on student veteran's adjustment to college. She was awarded a Faculty Development Leave for the spring semester of 2013 for the purposes of increasing her clinical expertise in the evaluation and treatment of military personnel and families, as well as gaining experience in clinical trial research with this population. She will spend approximately 6 months providing clinical services to veterans and their spouses in the Trauma unit at the Dallas VAMC.

Dr. Wang's proposal was selected for the 2012 Charn Uswachoke International Development Fund awarded by the Office of Provost. The proposed project includes a component aiming to enhance international research collaboration. Dr. Wang will collaborate with researchers at Beijing Normal University and Central China Normal University to conduct a research project investigating attachment relationships and adjustment of adolescents/young adults who were raised by their grandparents. Cross-cultural comparisons will be made possible by comparing the guardian grandparent data with those collected by Dr. Hayslip in the US. With the support of the Charn Uswachoke Fund, the Department of Psychology will host a visiting



scholar from China (likely in fall 2012 or spring 2013) to share her research and interact with our faculty and students during guest lectures, seminars, and small group discussions.

In August, Dr. Wang began his 2-year term serving as the US-based co-chair of the International Section of the APA Society of Counseling Psychology (the international co-chair is Dr. Makiko Kasai, a Professor at the Naruto University of Education in Japan). The International Section is one of the most active sections within the Division 17 with the goals to promote and facilitate advancements of counseling psychology in international contexts both in the US and around the globe. It currently has 275 members, including 75 US professional members, 65 international professionals, and more than 100 student members. If you are interested in international counseling psychology and would like to get more information about or join the International Section, please feel free to contact Dr. Wang at dcwang@unt.edu or 940-235-2678.

Dr. Mark Vosvick was elected Chair of the Faculty Senate for the 2012-2013 academic year. He continues to direct the Center for Psychosocial Health and co-direct the LGBT Studies Program (an undergraduate minor at UNT).

Students' & Alums' Growing Families

Aubrey (Harshaw) Austin and husband Harlan's daughter, Avery Sidonia Austin, was born on 9/5/12, at 3:06am, weighing 8 lbs., 5 oz. and was 20.75 inches long.



Leslee (Johnson) Marcom and husband Keith are happy to announce that their son, Luke Gerald Marcom, was born on August 19, 2012 at 4:35pm. He weighed 7lbs., 10oz. and was 19.75 inches long.



R. Mishelle Rodriguez & husband John's son, Kayden Elijah Rodriguez, was born happy & healthy on 6/13/12 at 8pm. He weighed 9 lbs., 2.5oz and was 22.5 inches long.



Melissa Ward Pinson & husband Donny's daughter, Sabine Elisabeth Pinson, was born May 23rd weighing 6 lbs., 13 oz. and measuring 20.5 inches long.



Introducing the Social Media & Alum Relations Team

SMART is a new volunteer service organization in the Counseling Program. This team will be responsible for coordinating and maintaining the social media pages of the Counseling Program. Marciana Ramos will be serving as the Alumni Liaison and SMART Coordinator, Sara Pollard will be managing LinkedIn, Kristina Rodriguez will be running the Twitter Page, and Shelly Sheinbein and Kristina Rodriguez will be co-managing the Facebook page.

More ways to keep in touch with the Counseling Program:

Find us on LinkedIn: UNT Counseling Psychology Graduate Students & Alumni

Follow us on Twitter: @UNTCnsIngPs

Friend us on Facebook: UNT Counseling Psyc

Once you find us on Facebook and send us a friend request, we will verify that you are an alum, retired faculty, or current student, faculty, or staff member before accepting your friend request. This way we can all share information and news with one another in a private setting where we know only fellow UNT Counseling Program students, faculty, staff, and alum are viewing our postings.

AND, as usual, please send us any news you would like included in our next Newsletter!

Director of Counseling Training: Patricia "Trish" L. Kaminski, Ph.D.
Practicum Coordinator: Larry Schneider, Ph.D.
Director of Counseling & Testing: Judy McConnell, Ph.D.
Chair of Psychology Department: Vicki Campbell, Ph.D.
Director of Psychology Clinic: Randall Cox, Ph.D.
Newsletter Editor/SMART Coordinator: Marciana Ramos, B.A.
SMART Team: Sara Pollard, Kristina Rodriguez, and Shelly Sheinbein

Please send news and
updates to:
marciana.ramos@unt.edu

Would you like to show your support for the Counseling Program by making a donation?

Please print this form to mail in along with your donation.

Ernest H. Harrell Memorial Scholarship Fund

For the amount of: \$10 \$25 \$50 Other

R.W. Johnson Counseling Psychology Scholarship Fund

For the amount of: \$10 \$25 \$50 Other

Counseling Psychology Gift Fund

For the amount of: \$10 \$25 \$50 Other

Mail checks and updates to:

Please make checks payable to the "Department of Psychology" & note the fund to which you would like to donate on the "Memo" line.

Counseling Psychology Program
c/o Trish Kaminski, Ph.D.
University of North Texas
Psychology Department
1155 Union Circle #311280
Denton, TX 76203-5017